

# Lower Thames Crossing

## 6.2 Environmental Statement Figures

### Figure 7.19 - Photomontages - Winter Year 1 and Summer Year 15 (3 of 4)

APFP Regulation 5(2)(a)  
Infrastructure Planning  
(Applications: Prescribed Forms and Procedure)  
Regulations 2009  
Volume 6

**DATE:** October 2022

Planning Inspectorate Scheme Ref: TR010032  
Application Document Ref: TR010032/APP/6.2

**VERSION:** 1.0

# Lower Thames Crossing

## Figure 7.19: Photomontages - Winter Year 1 and Summer Year 15 (3 of 4)

### List of contents

	Page number
<b>1 Photomontages</b> .....	<b>1</b>
1.1 Introduction .....	1
1.2 Schedule of Representative Viewpoints included in this application document .....	1

# 1 Photomontages

## 1.1 Introduction

- 1.1.1 For each Representative Viewpoint, the following photography and photomontage views have been provided:
- a. Baseline photography - Winter
  - b. Corresponding photomontage – Year 1 (opening year)
  - c. Baseline photography – Summer
  - d. Corresponding photomontage – Year 15 (design year)

## 1.2 Schedule of Representative Viewpoints included in this application document

- 1.2.1 Baseline photography and photomontages have been included for the following Representative Viewpoints within this part of Figure 7.19:

### Part Three of Figure 7.19: North of the River Thames

- a. N-02 - View from Fort Road, adjacent to Tilbury urban edge
- b. N-07 - View from bridleway 58 (off Love Lane)
- c. N-08 - View from Low Street Lane
- d. N-12 - View from residential properties in East Tilbury (off Beechcroft Avenue)
- e. N-17 - View from footpath 45 located within Orsett Golf Course
- f. N-19 - View from residential properties at Orsett Heath/Chadwell St Mary
- g. N-21 - View from the junction of Hornsby Lane/A1013 Stanford Road



P01	S8	05/08/2022	First Issued	BB	HP	SK
Rev	Status	Rev. Date	Purpose of revision	Drawn	Chck'd	Apprv'd

For location see Figure 7.16 - Visual Effects Drawing with Representative Viewpoint and Photomontage Locations

Camera: Canon EOS 6D MkII  
 Lens: Canon EF 50mm f/1.8 STM  
 Equipment: Manfrotto MA 454 Micro Positioning Plate  
 Manfrotto SBH-100 Ball Head

**Winter Viewpoint:**  
 Date and Time: N-02  
 06/04/2022 10:49

Visualisation Type: Type 3  
 Projection Type: Cylindrical  
 Enlargement Factor: 1.5  
 Horizontal FOV: 56.5°

FL, Max Aperture: 50mm, 1.75  
 Tripod Height: 1.5m  
 Viewpoint Ground Height: 6.2m AOD  
 Viewpoint Grid Reference: 565385E, 176613N

Distance to Order Limits: 200m  
 View Direction (Centre of View): ENE  
 GPS Accuracy: 5m



**LOWER THAMES CROSSING**  
 5th Floor Beaufort House  
 15 St Botolph Street  
 London EC3A 7DT

Project: LOWER THAMES CROSSING  
 Drawing title: Figure 7.19  
 Baseline Photography - Viewpoint N-02  
 Winter Year 1  
 Sheet 1 of 2

Drawn	BB	Date - 05/08/2022	Status	Revision
Checked	HP	Date - 05/08/2022	S8	P01
Approved	SK	Date - 05/08/2022	Application Document No. TR010032/APP/6.2	
Drawing number HE540039-CJV-ELS-SZP_ZZ000000_Z-DR-LV-00241A				



Rev	Status	Rev. Date	Purpose of revision	Drawn	Chck'd	Apprv'd
P01	S8	05/08/2022	First Issued	BB	HP	SK

For location see Figure 7.16 - Visual Effects Drawing with Representative Viewpoint and Photomontage Locations

Camera: Canon EOS 6D MkII  
 Lens: Canon EF 50mm f/1.8 STM  
 Equipment: Manfrotto MA 454 Micro Positioning Plate  
 Manfrotto SBH-100 Ball Head

**Winter Viewpoint:**  
 Date and Time: N-02  
 06/04/2022 10:49

Visualisation Type: Type 3  
 Projection Type: Cylindrical  
 Enlargement Factor: 1.5  
 Horizontal FOV: 56.5°

FL, Max Aperture: 50mm, 1.75  
 Tripod Height: 1.5m  
 Viewpoint Ground Height: 6.2m AOD  
 Viewpoint Grid Reference: 565385E, 176613N

Distance to Order Limits: 200m  
 View Direction (Centre of View): ENE  
 GPS Accuracy: 5m



**LOWER THAMES CROSSING**  
 5th Floor Beaufort House  
 15 St Botolph Street  
 London EC3A 7DT

Project: LOWER THAMES CROSSING  
 Drawing title: Figure 7.19  
 Photomontage - Viewpoint N-02  
 Winter Year 1  
 Sheet 1 of 2

Drawn	BB	Date - 05/08/2022	Status	Revision
Checked	HP	Date - 05/08/2022	S8	P01
Approved	SK	Date - 05/08/2022	Application Document No. TR010032/APP/6.2	
Drawing number HE540039-CJV-ELS-SZP_ZZ000000_Z-DR-LV-00241				



Rev	Status	Rev. Date	Purpose of revision	Drawn	Chck'd	Apprv'd
P01	S8	05/08/2022	First Issued	BB	HP	SK

For location see Figure 7.16 - Visual Effects Drawing with Representative Viewpoint and Photomontage Locations		<b>Summer Viewpoint:</b> Date and Time: N-02 14/06/2022 10:28	Visualisation Type: Type 3 Projection Type: Cylindrical Enlargement Factor: 1.5 Horizontal FOV: 56.5°	FL, Max Aperture: 50mm, 1.75 Tripod Height: 1.5m Viewpoint Ground Height: 6.2m AOD Viewpoint Grid Reference: 565385E, 176613N	Distance to Order Limits: 200m View Direction (Centre of View): ENE GPS Accuracy: 5m
Camera: Canon EOS 6D MkII Lens: Canon EF 50mm f/1.8 STM Equipment: Manfrotto MA 454 Micro Positioning Plate Manfrotto SBH-100 Ball Head					

Client



**LOWER THAMES CROSSING**  
 5th Floor Beaufort House  
 15 St Botolph Street  
 London EC3A 7DT

Project	LOWER THAMES CROSSING
Drawing title	Figure 7.19 Baseline Photography - Viewpoint N-02 Summer Year 15 Sheet 2 of 2

Drawn	BB	Date	- 05/08/2022	Status	S8	Revision	P01
Checked	HP	Date	- 05/08/2022				
Approved	SK	Date	- 05/08/2022	Application Document No. TR010032/APP/6.2			
Drawing number		HE540039-CJV-ELS-SZP_ZZ000000_Z-DR-LV-00242A					



Rev	Status	Rev. Date	Purpose of revision	Drawn	Chck'd	Apprv'd
P01	S8	05/08/2022	First Issued	BB	HP	SK

For location see Figure 7.16 - Visual Effects Drawing with Representative Viewpoint and Photomontage Locations		<b>Summer Viewpoint:</b> Date and Time:		N-02 14/06/2022 10:29	
Camera:	Canon EOS 6D MkII	Visualisation Type:	Type 3	FL, Max Aperture:	50mm, 1.75
Lens:	Canon EF 50mm f/1.8 STM	Projection Type:	Cylindrical	Tripod Height:	1.5m
Equipment:	Manfrotto MA 454 Micro Positioning Plate	Enlargement Factor:	1.5	Viewpoint Ground Height:	6.2m AOD
	Manfrotto SBH-100 Ball Head	Horizontal FOV:	56.5°	Viewpoint Grid Reference:	565385E, 176613N
				Distance to Order Limits:	200m
				View Direction (Centre of View):	ENE
				GPS Accuracy:	5m

Client



**LOWER THAMES CROSSING**  
 5th Floor Beaufort House  
 15 St Botolph Street  
 London EC3A 7DT

Project	LOWER THAMES CROSSING
Drawing title	Figure 7.19 Photomontage - Viewpoint N-02 Summer Year 15 Sheet 2 of 2

Drawn	BB	Date - 05/08/2022	Status	S8	Revision	P01
Checked	HP	Date - 05/08/2022	Application Document No. TR010032/APP/6.2			
Approved	SK	Date - 05/08/2022	Drawing number			
HE540039-CJV-ELS-SZP_ZZ000000_Z-DR-LV-00242						



Rev	Status	Rev. Date	Purpose of revision	Drawn	Chck'd	Apprv'd
P01	S8	05/08/2022	First Issued	BB	HP	SK

<small>For location see Figure 7.16 - Visual Effects Drawing with Representative Viewpoint and Photomontage Locations</small>		<b>Winter Viewpoint:</b> Date and Time: N-07 18/02/2019 11:45	Camera: Canon EOS 6D MkII Lens: Canon EF 50mm f/1.8 STM Equipment: Manfrotto MA 454 Micro Positioning Plate Manfrotto SBH-100 Ball Head	Visualisation Type: Type 3 Projection Type: Cylindrical Enlargement Factor: 1.5 Horizontal FOV: 56.5°	FL, Max Aperture: 50mm, 1.75 Tripod Height: 1.5m Viewpoint Ground Height: 10.4m AOD Viewpoint Grid Reference: 567722E, 177829N	Distance to Order Limits: 0m View Direction (Centre of View): WSW GPS Accuracy: 5m
---	--	---	--	--	---	--



**LOWER THAMES CROSSING**  
 5th Floor Beaufort House  
 15 St Botolph Street  
 London EC3A 7DT

Project	LOWER THAMES CROSSING
Drawing title	Figure 7.19 Baseline Photography - Viewpoint N-07 Winter Year 1 Sheet 1 of 4

Drawn	BB	Date - 05/08/2022	Status	S8	Revision	P01
Checked	HP	Date - 05/08/2022	Application Document No. TR010032/APP/6.2			
Approved	SK	Date - 05/08/2022	Drawing number			
HE540039-CJV-ELS-SZP_ZZ000000_Z-DR-LV-00243A						





Rev	Status	Rev. Date	Purpose of revision	Drawn	Chck'd	Apprv'd
P01	S8	05/08/2022	First Issued	BB	HP	SK

For location see Figure 7.16 - Visual Effects Drawing with Representative Viewpoint and Photomontage Locations

Camera: Canon EOS 6D MkII  
 Lens: Canon EF 50mm f/1.8 STM  
 Equipment: Manfrotto MA 454 Micro Positioning Plate  
 Manfrotto SBH-100 Ball Head

**Winter Viewpoint:**  
 Date and Time: N-07  
 18/02/2019 11:45

Visualisation Type: Type 3  
 Projection Type: Cylindrical  
 Enlargement Factor: 1.5  
 Horizontal FOV: 56.5°

FL, Max Aperture: 50mm, 1.75  
 Tripod Height: 1.5m  
 Viewpoint Ground Height: 10.4m AOD  
 Viewpoint Grid Reference: 567722E, 177829N

Distance to Order Limits: 7m  
 View Direction (Centre of View): WSW  
 GPS Accuracy: 5m



**LOWER THAMES CROSSING**  
 5th Floor Beaufort House  
 15 St Botolph Street  
 London EC3A 7DT

Project: LOWER THAMES CROSSING  
 Drawing title: Figure 7.19  
 Photomontage - Viewpoint N-07  
 Winter Year 1  
 Sheet 1 of 4

Drawn	BB	Date - 05/08/2022	Status	Revision
Checked	HP	Date - 05/08/2022	S8	P01
Approved	SK	Date - 05/08/2022	Application Document No. TR010032/APP/6.2	
Drawing number HE540039-CJV-ELS-SZP_ZZ000000_Z-DR-LV-00243				



Rev	Status	Rev. Date	Purpose of revision	Drawn	Chck'd	Apprv'd
P01	S8	05/08/2022	First Issued	BB	HP	SK

For location see Figure 7.16 - Visual Effects Drawing with Representative Viewpoint and Photomontage Locations

Camera: Canon EOS 6D MkII  
 Lens: Canon EF 50mm f/1.8 STM  
 Equipment: Manfrotto MA 454 Micro Positioning Plate  
 Manfrotto SBH-100 Ball Head

**Winter Viewpoint:**  
 Date and Time: N-07  
 18/02/2019 11:45

Visualisation Type: Type 3  
 Projection Type: Cylindrical  
 Enlargement Factor: 1.5  
 Horizontal FOV: 56.5°

FL, Max Aperture: 50mm, 1.75  
 Tripod Height: 1.5m  
 Viewpoint Ground Height: 10.4m AOD  
 Viewpoint Grid Reference: 567722E, 177829N

Distance to Order Limits: 0m  
 View Direction (Centre of View): WSW  
 GPS Accuracy: 5m



**Client**

**LOWER THAMES CROSSING**  
 5th Floor Beaufort House  
 15 St Botolph Street  
 London EC3A 7DT

**Project**

LOWER THAMES CROSSING

**Drawing title**

Figure 7.19  
 Baseline Photography - Viewpoint N-07  
 Winter Year 1  
 Sheet 2 of 4

Drawn	BB	Date - 05/08/2022	Status	Revision
Checked	HP	Date - 05/08/2022	S8	P01
Approved	SK	Date - 05/08/2022	Application Document No. TR010032/APP/6.2	
Drawing number				
HE540039-CJV-ELS-SZP_ZZ000000_Z-DR-LV-00244A				



Rev	Status	Rev. Date	Purpose of revision	Drawn	Chck'd	Apprv'd
P01	S8	05/08/2022	First Issued	BB	HP	SK

For location see Figure 7.16 - Visual Effects Drawing with Representative Viewpoint and Photomontage Locations

Camera: Canon EOS 6D MkII  
 Lens: Canon EF 50mm f/1.8 STM  
 Equipment: Manfrotto MA 454 Micro Positioning Plate  
 Manfrotto SBH-100 Ball Head

**Winter Viewpoint:**  
 Date and Time: N-07  
 18/02/2019 11:45

Visualisation Type: Type 3  
 Projection Type: Cylindrical  
 Enlargement Factor: 1.5  
 Horizontal FOV: 56.5°

FL, Max Aperture: 50mm, 1.75  
 Tripod Height: 1.5m  
 Viewpoint Ground Height: 10.4m AOD  
 Viewpoint Grid Reference: 567722E, 177829N

Distance to Order Limits: 7m  
 View Direction (Centre of View): WSW  
 GPS Accuracy: 5m



**Client**  
**LOWER THAMES CROSSING**  
 5th Floor Beaufort House  
 15 St Botolph Street  
 London EC3A 7DT

**Project**  
 LOWER THAMES CROSSING

**Drawing title**  
 Figure 7.19  
 Photomontage - Viewpoint N-07  
 Winter Year 1  
 Sheet 2 of 4

Drawn	BB	Date - 05/08/2022	Status	Revision
Checked	HP	Date - 05/08/2022	S8	P01
Approved	SK	Date - 05/08/2022	Application Document No. TR010032/APP/6.2	
Drawing number		HE540039-CJV-ELS-SZP_ZZ000000_Z-DR-LV-00244		



P01	S8	05/08/2022	First Issued	BB	HP	SK
Rev	Status	Rev. Date	Purpose of revision	Drawn	Chck'd	Apprv'd

For location see Figure 7.16 - Visual Effects Drawing with Representative Viewpoint and Photomontage Locations		<b>Summer Viewpoint:</b>	N-07				
		Date and Time:	03/06/2019 14:42				
Camera:	Canon EOS 6D MkII	Visualisation Type:	Type 3	FL, Max Aperture:	50mm, 1.75	Distance to Order Limits:	0m
Lens:	Canon EF 50mm f/1.8 STM	Projection Type:	Cylindrical	Tripod Height:	1.5m	View Direction	(Centre of View): WSW
Equipment:	Manfrotto MA 454 Micro Positioning Plate	Enlargement Factor:	1.5	Viewpoint Ground Height:	10.4m AOD	GPS Accuracy:	5m
	Manfrotto SBH-100 Ball Head	Horizontal FOV:	56.5°	Viewpoint Grid Reference:	567722E, 177829N		



**LOWER THAMES CROSSING**  
 5th Floor Beaufort House  
 15 St Botolph Street  
 London EC3A 7DT

Project	LOWER THAMES CROSSING
Drawing title	Figure 7.19 Baseline Photography - Viewpoint N-07 Summer Year 15 Sheet 3 of 4

Drawn	BB	Date - 05/08/2022	Status	S8	Revision	P01
Checked	HP	Date - 05/08/2022				
Approved	SK	Date - 05/08/2022	Application Document No. TR010032/APP/6.2			
Drawing number		HE540039-CJV-ELS-SZP_ZZ000000_Z-DR-LV-00245A				



P01	S8	05/08/2022	First Issued	BB	HP	SK
Rev	Status	Rev. Date	Purpose of revision	Drawn	Chck'd	Apprv'd

For location see Figure 7.16 - Visual Effects Drawing with Representative Viewpoint and Photomontage Locations		<b>Summer Viewpoint:</b> Date and Time: N-07 03/06/2019 14:42	
Camera:	Canon EOS 6D MkII	Visualisation Type:	Type 3
Lens:	Canon EF 50mm f/1.8 STM	Projection Type:	Cylindrical
Equipment:	Manfrotto MA 454 Micro Positioning Plate	Enlargement Factor:	1.5
	Manfrotto SBH-100 Ball Head	Horizontal FOV:	56.5°
FL, Max Aperture:	50mm, 1.75	Distance to Order Limits:	7m
Tripod Height:	1.5m	View Direction (Centre of View):	WSW
Viewpoint Ground Height:	10.4m AOD	GPS Accuracy:	5m
Viewpoint Grid Reference:	567722E, 177829N		

Client



**LOWER THAMES CROSSING**  
 5th Floor Beaufort House  
 15 St Botolph Street  
 London EC3A 7DT

Project	LOWER THAMES CROSSING
Drawing title	Figure 7.19 Photomontage - Viewpoint N-07 Summer Year 15 Sheet 3 of 4

Drawn	BB	Date - 05/08/2022	Status	S8	Revision	P01
Checked	HP	Date - 05/08/2022	Application Document No. TR010032/APP/6.2			
Approved	SK	Date - 05/08/2022	Drawing number			
HE540039-CJV-ELS-SZP_ZZ000000_Z-DR-LV-00245						



Rev	Status	Rev. Date	Purpose of revision	Drawn	Chck'd	Apprv'd
P01	S8	05/08/2022	First Issued	BB	HP	SK

For location see Figure 7.16 - Visual Effects Drawing with Representative Viewpoint and Photomontage Locations

Camera: Canon EOS 6D MkII  
 Lens: Canon EF 50mm f/1.8 STM  
 Equipment: Manfrotto MA 454 Micro Positioning Plate  
 Manfrotto SBH-100 Ball Head

**Summer Viewpoint:**  
 Date and Time: N-07  
 03/06/2019 14:42

Visualisation Type: Type 3  
 Projection Type: Cylindrical  
 Enlargement Factor: 1.5  
 Horizontal FOV: 56.5°

FL, Max Aperture: 50mm, 1.75  
 Tripod Height: 1.5m  
 Viewpoint Ground Height: 10.4m AOD  
 Viewpoint Grid Reference: 567722E, 177829N

Distance to Order Limits: 0m  
 View Direction (Centre of View): WSW  
 GPS Accuracy: 5m



**LOWER THAMES CROSSING**  
 5th Floor Beaufort House  
 15 St Botolph Street  
 London EC3A 7DT

Project: LOWER THAMES CROSSING  
 Drawing title: Figure 7.19  
 Baseline Photography - Viewpoint N-07  
 Summer Year 15  
 Sheet 4 of 4

Drawn	BB	Date - 05/08/2022	Status	Revision
Checked	HP	Date - 05/08/2022	S8	P01
Approved	SK	Date - 05/08/2022	Application Document No. TR010032/APP/6.2	
Drawing number HE540039-CJV-ELS-SZP_ZZ000000_Z-DR-LV-00246A				



For location see Figure 7.16 - Visual Effects Drawing with Representative Viewpoint and Photomontage Locations

**Summer Viewpoint:** N-07  
Date and Time: 03/06/2019 14:42

Camera: Canon EOS 6D MkII  
Lens: Canon EF 50mm f/1.8 STM  
Equipment: Manfrotto MA 454 Micro Positioning Plate  
Manfrotto SBH-100 Ball Head

Visualisation Type: Type 3  
Projection Type: Cylindrical  
Enlargement Factor: 1.5  
Horizontal FOV: 56.5°

FL, Max Aperture: 50mm, 1.75  
Tripod Height: 1.5m  
Viewpoint Ground Height: 10.4m AOD  
Viewpoint Grid Reference: 567722E, 177829N

Distance to Order Limits: 7m  
View Direction (Centre of View): WSW  
GPS Accuracy: 5m



**LOWER THAMES CROSSING**  
5th Floor Beaufort House  
15 St Botolph Street  
London EC3A 7DT

Project: LOWER THAMES CROSSING  
Drawing title: Figure 7.19  
Photomontage - Viewpoint N-07  
Summer Year 15  
Sheet 4 of 4

Drawn	BB	Date - 05/08/2022	Status	Revision
Checked	HP	Date - 05/08/2022	S8	P01
Approved	SK	Date - 05/08/2022	Application Document No. TR010032/APP/6.2	
Drawing number HE540039-CJV-ELS-SZP_ZZ000000_Z-DR-LV-00246				

Rev	Status	Rev. Date	Purpose of revision	Drawn	Chck'd	Apprv'd
P01	S8	05/08/2022	First Issued	BB	HP	SK



For location see Figure 7.16 - Visual Effects Drawing with Representative Viewpoint and Photomontage Locations														
<table border="1"> <tr> <th>Rev</th> <th>Status</th> <th>Rev. Date</th> <th>Purpose of revision</th> <th>Drawn</th> <th>Chck'd</th> <th>Apprv'd</th> </tr> <tr> <td>P01</td> <td>S8</td> <td>05/08/2022</td> <td>First Issued</td> <td>BB</td> <td>HP</td> <td>SK</td> </tr> </table>	Rev	Status	Rev. Date	Purpose of revision	Drawn	Chck'd	Apprv'd	P01	S8	05/08/2022	First Issued	BB	HP	SK
Rev	Status	Rev. Date	Purpose of revision	Drawn	Chck'd	Apprv'd								
P01	S8	05/08/2022	First Issued	BB	HP	SK								

<b>Winter Viewpoint:</b> Date and Time: N-08 18/02/2019 14:52	<b>Visualisation Type:</b> Type 3 Cylindrical <b>Projection Type:</b> 1.5 <b>Enlargement Factor:</b> 56.5° <b>Horizontal FOV:</b>	<b>FL, Max Aperture:</b> 50mm, 1.75 <b>Tripod Height:</b> 1.5m <b>Viewpoint Ground Height:</b> 4.9m AOD <b>Viewpoint Grid Reference:</b> 566777E, 177724N	<b>Distance to Order Limits:</b> 0m <b>View Direction (Centre of View):</b> E <b>GPS Accuracy:</b> 5m
---	--	--	---



Client  
**LOWER THAMES CROSSING**  
 5th Floor Beaufort House  
 15 St Botolph Street  
 London EC3A 7DT

Project	LOWER THAMES CROSSING
Drawing title	Figure 7.19 Baseline Photography - Viewpoint N-08 Winter Year 1 Sheet 1 of 4

Drawn	BB	Date - 05/08/2022	Status	S8	Revision	P01
Checked	HP	Date - 05/08/2022	Application Document No. TR010032/APP/6.2			
Approved	SK	Date - 05/08/2022	Drawing number			
HE540039-CJV-ELS-SZP_ZZ000000_Z-DR-LV-00247A						





P01	S8	05/08/2022	First Issued	BB	HP	SK
Rev	Status	Rev. Date	Purpose of revision	Drawn	Chck'd	Apprv'd

For location see Figure 7.16 - Visual Effects Drawing with Representative Viewpoint and Photomontage Locations

Camera: Canon EOS 6D MkII  
 Lens: Canon EF 50mm f/1.8 STM  
 Equipment: Manfrotto MA 454 Micro Positioning Plate  
 Manfrotto SBH-100 Ball Head

**Winter Viewpoint:**  
 Date and Time: N-08  
 18/02/2019 14:52

Visualisation Type: Type 3  
 Projection Type: Cylindrical  
 Enlargement Factor: 1.5  
 Horizontal FOV: 56.5°

FL, Max Aperture: 50mm, 1.75  
 Tripod Height: 1.5m  
 Viewpoint Ground Height: 4.9m AOD  
 Viewpoint Grid Reference: 566777E, 177724N

Distance to Order Limits: 0m  
 View Direction (Centre of View): E  
 GPS Accuracy: 5m



**LOWER THAMES CROSSING**  
 5th Floor Beaufort House  
 15 St Botolph Street  
 London EC3A 7DT

Project: LOWER THAMES CROSSING  
 Drawing title: Figure 7.19  
 Photomontage - Viewpoint N-08  
 Winter Year 1  
 Sheet 1 of 4

Drawn	BB	Date - 05/08/2022	Status	Revision
Checked	HP	Date - 05/08/2022	S8	P01
Approved	SK	Date - 05/08/2022	Application Document No. TR010032/APP/6.2	
Drawing number HE540039-CJV-ELS-SZP_ZZ000000_Z-DR-LV-00247				



P01	S8	05/08/2022	First Issued	BB	HP	SK
Rev	Status	Rev. Date	Purpose of revision	Drawn	Chck'd	Apprv'd

For location see Figure 7.16 - Visual Effects Drawing with Representative Viewpoint and Photomontage Locations

Camera: Canon EOS 6D MkII  
 Lens: Canon EF 50mm f/1.8 STM  
 Equipment: Manfrotto MA 454 Micro Positioning Plate  
 Manfrotto SBH-100 Ball Head

**Winter Viewpoint:**  
 Date and Time: N-08  
 18/02/2019 14:52

Visualisation Type: Type 3  
 Projection Type: Cylindrical  
 Enlargement Factor: 1.5  
 Horizontal FOV: 56.5°

FL, Max Aperture: 50mm, 1.75  
 Tripod Height: 1.5m  
 Viewpoint Ground Height: 4.9m AOD  
 Viewpoint Grid Reference: 566777E, 177724N

Distance to Order Limits: 0m  
 View Direction (Centre of View): E  
 GPS Accuracy: 5m



**Client**  
**LOWER THAMES CROSSING**  
 5th Floor Beaufort House  
 15 St Botolph Street  
 London EC3A 7DT

**Project**  
 LOWER THAMES CROSSING

**Drawing title**  
 Figure 7.19  
 Baseline Photography - Viewpoint N-08  
 Winter Year 1  
 Sheet 2 of 4

Drawn	BB	Date - 05/08/2022	Status	Revision
Checked	HP	Date - 05/08/2022	S8	P01
Approved	SK	Date - 05/08/2022	Application Document No. TR010032/APP/6.2	
Drawing number HE540039-CJV-ELS-SZP_ZZ000000_Z-DR-LV-00248A				



Rev	Status	Rev. Date	Purpose of revision	Drawn	Chck'd	Apprv'd
P01	S8	05/08/2022	First Issued	BB	HP	SK

For location see Figure 7.16 - Visual Effects Drawing with Representative Viewpoint and Photomontage Locations

Camera: Canon EOS 6D MkII  
 Lens: Canon EF 50mm f/1.8 STM  
 Equipment: Manfrotto MA 454 Micro Positioning Plate  
 Manfrotto SBH-100 Ball Head

**Winter Viewpoint:**  
 Date and Time: N-08  
 18/02/2019 14:52

Visualisation Type: Type 3  
 Projection Type: Cylindrical  
 Enlargement Factor: 1.5  
 Horizontal FOV: 56.5°

FL, Max Aperture: 50mm, 1.75  
 Tripod Height: 1.5m  
 Viewpoint Ground Height: 4.9m AOD  
 Viewpoint Grid Reference: 566777E, 177724N

Distance to Order Limits: 0m  
 View Direction (Centre of View): E  
 GPS Accuracy: 5m



**LOWER THAMES CROSSING**  
 5th Floor Beaufort House  
 15 St Botolph Street  
 London EC3A 7DT

Project: LOWER THAMES CROSSING  
 Drawing title: Figure 7.19  
 Photomontage - Viewpoint N-08  
 Winter Year 1  
 Sheet 2 of 4

Drawn	BB	Date - 05/08/2022	Status	Revision
Checked	HP	Date - 05/08/2022	S8	P01
Approved	SK	Date - 05/08/2022	Application Document No. TR010032/APP/6.2	
Drawing number HE540039-CJV-ELS-SZP_ZZ000000_Z-DR-LV-00248				



Rev	Status	Rev. Date	Purpose of revision	Drawn	Chck'd	Apprv'd
P01	S8	05/08/2022	First Issued	BB	HP	SK

For location see Figure 7.16 - Visual Effects Drawing with Representative Viewpoint and Photomontage Locations		<b>Summer Viewpoint:</b>	N-08				
		Date and Time:	03/06/2019 14:55				
Camera:	Canon EOS 6D MkII	Visualisation Type:	Type 3	FL, Max Aperture:	50mm, 1.75	Distance to Order Limits:	0m
Lens:	Canon EF 50mm f/1.8 STM	Projection Type:	Cylindrical	Tripod Height:	1.5m	View Direction	(Centre of View): E
Equipment:	Manfrotto MA 454 Micro Positioning Plate	Enlargement Factor:	1.5	Viewpoint Ground Height:	4.9m AOD	GPS Accuracy:	5m
	Manfrotto SBH-100 Ball Head	Horizontal FOV:	56.5°	Viewpoint Grid Reference:	566777E, 177724N		

Client



**LOWER THAMES CROSSING**  
 5th Floor Beaufort House  
 15 St Botolph Street  
 London EC3A 7DT

Project	LOWER THAMES CROSSING
Drawing title	Figure 7.19 Baseline Photography - Viewpoint N-08 Summer Year 15 Sheet 3 of 4

Drawn	BB	Date - 05/08/2022	Status	S8	Revision	P01
Checked	HP	Date - 05/08/2022				
Approved	SK	Date - 05/08/2022	Application Document No. TR010032/APP/6.2			
Drawing number		HE540039-CJV-ELS-SZP_ZZ000000_Z-DR-LV-00249A				



Rev	Status	Rev. Date	Purpose of revision	Drawn	Chck'd	Apprv'd
P01	S8	05/08/2022	First Issued	BB	HP	SK

For location see Figure 7.16 - Visual Effects Drawing with Representative Viewpoint and Photomontage Locations		<b>Summer Viewpoint:</b> Date and Time:	N-08 03/06/2019 14:55	<b>Visualisation Type:</b>	Type 3	<b>FL, Max Aperture:</b>	50mm, 1.75	<b>Distance to Order Limits:</b>	0m
<b>Camera:</b>	Canon EOS 6D MkII	<b>Projection Type:</b>	Cylindrical	<b>Tripod Height:</b>	1.5m	<b>Viewpoint Ground Height:</b>	4.9m AOD	<b>View Direction</b> (Centre of View):	E
<b>Lens:</b>	Canon EF 50mm f/1.8 STM	<b>Enlargement Factor:</b>	1.5	<b>Viewpoint Grid Reference:</b>	56677E, 177724N	<b>GPS Accuracy:</b>	5m		
<b>Equipment:</b>	Manfrotto MA 454 Micro Positioning Plate Manfrotto SBH-100 Ball Head	<b>Horizontal FOV:</b>	56.5°						

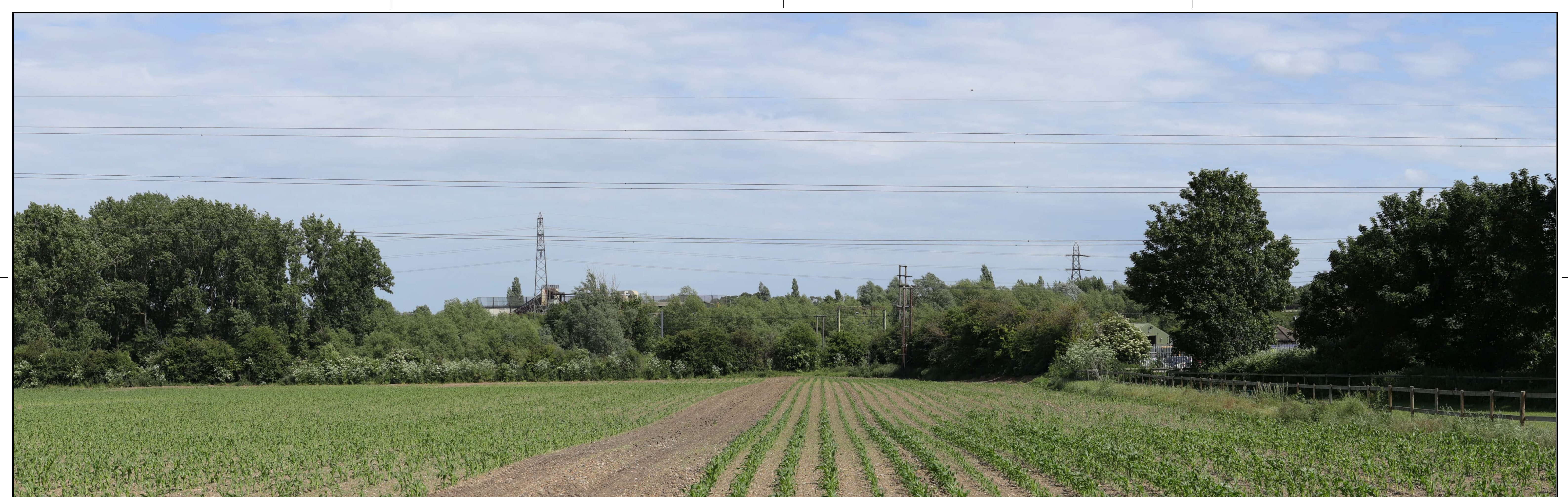
Client



**LOWER THAMES CROSSING**  
5th Floor Beaufort House  
15 St Botolph Street  
London EC3A 7DT

<b>Project</b>	LOWER THAMES CROSSING
<b>Drawing title</b>	Figure 7.19 Photomontage - Viewpoint N-08 Summer Year 15 Sheet 3 of 4

<b>Drawn</b>	BB	<b>Date</b>	- 05/08/2022	<b>Status</b>	S8	<b>Revision</b>	P01
<b>Checked</b>	HP	<b>Date</b>	- 05/08/2022	<b>Application Document No.</b> TR010032/APP/6.2			
<b>Approved</b>	SK	<b>Date</b>	- 05/08/2022	<b>Drawing number</b>			
				<b>HE540039-CJV-ELS-SZP_ZZ000000_Z-DR-LV-00249</b>			



Rev	Status	Rev. Date	Purpose of revision	Drawn	Chck'd	Apprv'd
P01	S8	05/08/2022	First Issued	BB	HP	SK

For location see Figure 7.16 - Visual Effects Drawing with Representative Viewpoint and Photomontage Locations		<b>Summer Viewpoint:</b> Date and Time: N-08 03/06/2019 14:55	Camera: Canon EOS 6D MkII Lens: Canon EF 50mm f/1.8 STM Equipment: Manfrotto MA 454 Micro Positioning Plate Manfrotto SBH-100 Ball Head	Visualisation Type: Type 3 Projection Type: Cylindrical Enlargement Factor: 1.5 Horizontal FOV: 56.5°	FL, Max Aperture: 50mm, 1.75 Tripod Height: 1.5m Viewpoint Ground Height: 4.9m AOD Viewpoint Grid Reference: 566777E, 177724N	Distance to Order Limits: 0m View Direction (Centre of View): E GPS Accuracy: 5m
--	--	---	--	--	--	--

Client



**LOWER THAMES CROSSING**  
 5th Floor Beaufort House  
 15 St Botolph Street  
 London EC3A 7DT

Project	LOWER THAMES CROSSING
Drawing title	Figure 7.19 Baseline Photography - Viewpoint N-08 Summer Year 15 Sheet 4 of 4

Drawn	BB	Date - 05/08/2022	Status	Revision
Checked	HP	Date - 05/08/2022	S8	P01
Approved	SK	Date - 05/08/2022	Application Document No. TR010032/APP/6.2	
Drawing number		HE540039-CJV-ELS-SZP_ZZ000000_Z-DR-LV-00250A		



Rev	Status	Rev. Date	Purpose of revision	Drawn	Chck'd	Apprv'd
P01	S8	05/08/2022	First Issued	BB	HP	SK

For location see Figure 7.16 - Visual Effects Drawing with Representative Viewpoint and Photomontage Locations		<b>Summer Viewpoint:</b>	N-08				
		Date and Time:	03/06/2019 14:55				
Camera:	Canon EOS 6D MkII	Visualisation Type:	Type 3	FL, Max Aperture:	50mm, 1.75	Distance to Order Limits:	0m
Lens:	Canon EF 50mm f/1.8 STM	Projection Type:	Cylindrical	Tripod Height:	1.5m	View Direction	E
Equipment:	Manfrotto MA 454 Micro Positioning Plate	Enlargement Factor:	1.5	Viewpoint Ground Height:	4.9m AOD	(Centre of View):	E
	Manfrotto SBH-100 Ball Head	Horizontal FOV:	56.5°	Viewpoint Grid Reference:	566777E, 177724N	GPS Accuracy:	5m

Client



**LOWER THAMES CROSSING**  
 5th Floor Beaufort House  
 15 St Botolph Street  
 London EC3A 7DT

Project	LOWER THAMES CROSSING
Drawing title	Figure 7.19 Photomontage - Viewpoint N-08 Summer Year 15 Sheet 4 of 4

Drawn	BB	Date - 05/08/2022	Status	S8	Revision	P01
Checked	HP	Date - 05/08/2022				
Approved	SK	Date - 05/08/2022	Application Document No. TR010032/APP/6.2			
Drawing number		HE540039-CJV-ELS-SZP_ZZ000000_Z-DR-LV-00250				



Rev	Status	Rev. Date	Purpose of revision	Drawn	Chck'd	Apprv'd
P01	S8	05/08/2022	First Issued	BB	HP	SK

For location see Figure 7.16 - Visual Effects Drawing with Representative Viewpoint and Photomontage Locations

Camera: Canon EOS 6D MkII  
 Lens: Canon EF 50mm f/1.8 STM  
 Equipment: Manfrotto MA 454 Micro Positioning Plate  
 Manfrotto SBH-100 Ball Head

**Winter Viewpoint:**  
 Date and Time: N-12  
 18/02/2019 10:46

Visualisation Type: Type 3  
 Projection Type: Cylindrical  
 Enlargement Factor: 1.5  
 Horizontal FOV: 56.5°

FL, Max Aperture: 50mm, 1.75  
 Tripod Height: 1.5m  
 Viewpoint Ground Height: 7.4m AOD  
 Viewpoint Grid Reference: 567448E, 178720N

Distance to Order Limits: 75m  
 View Direction (Centre of View): SW  
 GPS Accuracy: 5m



**Client**  
**LOWER THAMES CROSSING**  
 5th Floor Beaufort House  
 15 St Botolph Street  
 London EC3A 7DT

**Project**  
 LOWER THAMES CROSSING

**Drawing title**  
 Figure 7.19  
 Baseline Photography - Viewpoint N-12  
 Winter Year 1  
 Sheet 1 of 2

Drawn	BB	Date - 05/08/2022	Status	Revision
Checked	HP	Date - 05/08/2022	S8	P01
Approved	SK	Date - 05/08/2022	Application Document No. TR010032/APP/6.2	
Drawing number HE540039-CJV-ELS-SZP_ZZ000000_Z-DR-LV-00251A				





Rev	Status	Rev. Date	Purpose of revision	Drawn	Chck'd	Apprv'd
P01	S8	05/08/2022	First Issued	BB	HP	SK

For location see Figure 7.16 - Visual Effects Drawing with Representative Viewpoint and Photomontage Locations

Camera: Canon EOS 6D MkII  
 Lens: Canon EF 50mm f/1.8 STM  
 Equipment: Manfrotto MA 454 Micro Positioning Plate  
 Manfrotto SBH-100 Ball Head

**Winter Viewpoint:**  
 Date and Time: N-12  
 18/02/2019 10:46

Visualisation Type: Type 3  
 Projection Type: Cylindrical  
 Enlargement Factor: 1.5  
 Horizontal FOV: 56.5°

FL, Max Aperture: 50mm, 1.75  
 Tripod Height: 1.5m  
 Viewpoint Ground Height: 7.4m AOD  
 Viewpoint Grid Reference: 567448E, 178720N

Distance to Order Limits: 0m  
 View Direction (Centre of View): SW  
 GPS Accuracy: 5m



**Client**  
**LOWER THAMES CROSSING**  
 5th Floor Beaufort House  
 15 St Botolph Street  
 London EC3A 7DT

**Project**  
 LOWER THAMES CROSSING

**Drawing title**  
 Figure 7.19  
 Photomontage - Viewpoint N-12  
 Winter Year 1  
 Sheet 1 of 2

Drawn	BB	Date - 05/08/2022	Status	Revision
Checked	HP	Date - 05/08/2022	S8	P01
Approved	SK	Date - 05/08/2022	Application Document No. TR010032/APP/6.2	
Drawing number HE540039-CJV-ELS-SZP_ZZ000000_Z-DR-LV-00251				



P01	S8	05/08/2022	First Issued	BB	HP	SK
Rev	Status	Rev. Date	Purpose of revision	Drawn	Chck'd	Apprv'd

For location see Figure 7.16 - Visual Effects Drawing with Representative Viewpoint and Photomontage Locations		<b>Summer Viewpoint:</b> Date and Time:		N-12 03/06/2019 17:37	
Camera:	Canon EOS 6D MkII	Visualisation Type:	Type 3	FL, Max Aperture:	50mm, 1.75
Lens:	Canon EF 50mm f/1.8 STM	Projection Type:	Cylindrical	Tripod Height:	1.5m
Equipment:	Manfrotto MA 454 Micro Positioning Plate	Enlargement Factor:	1.5	Viewpoint Ground Height:	7.4m AOD
	Manfrotto SBH-100 Ball Head	Horizontal FOV:	56.5°	Viewpoint Grid Reference:	567448E, 178720N
				Distance to Order Limits:	75m
				View Direction (Centre of View):	SW
				GPS Accuracy:	5m

Client



**LOWER THAMES CROSSING**  
 5th Floor Beaufort House  
 15 St Botolph Street  
 London EC3A 7DT

Project	LOWER THAMES CROSSING
Drawing title	Figure 7.19 Baseline Photography - Viewpoint N-12 Summer Year 15 Sheet 2 of 2

Drawn	BB	Date - 05/08/2022	Status	S8	Revision	P01
Checked	HP	Date - 05/08/2022	Application Document No. TR010032/APP/6.2			
Approved	SK	Date - 05/08/2022	Drawing number			
HE540039-CJV-ELS-SZP_ZZ000000_Z-DR-LV-00252A						



P01	S8	05/08/2022	First Issued	BB	HP	SK
Rev	Status	Rev. Date	Purpose of revision	Drawn	Chck'd	Apprv'd

For location see Figure 7.16 - Visual Effects Drawing with Representative Viewpoint and Photomontage Locations		<b>Summer Viewpoint:</b> Date and Time: N-12 03/06/2019 17:37	Camera: Canon EOS 6D MkII Lens: Canon EF 50mm f/1.8 STM Equipment: Manfrotto MA 454 Micro Positioning Plate Manfrotto SBH-100 Ball Head	Visualisation Type: Type 3 Projection Type: Cylindrical Enlargement Factor: 1.5 Horizontal FOV: 56.5°	FL, Max Aperture: 50mm, 1.75 Tripod Height: 1.5m Viewpoint Ground Height: 7.4m AOD Viewpoint Grid Reference: 567448E, 178720N	Distance to Order Limits: 0m View Direction (Centre of View): SW GPS Accuracy: 5m
--	--	---	--	--	--	---



**LOWER THAMES CROSSING**  
 5th Floor Beaufort House  
 15 St Botolph Street  
 London EC3A 7DT

Project	LOWER THAMES CROSSING
Drawing title	Figure 7.19 Photomontage - Viewpoint N-12 Summer Year 15 Sheet 2 of 2

Drawn	BB	Date - 05/08/2022	Status	Revision
Checked	HP	Date - 05/08/2022	S8	P01
Approved	SK	Date - 05/08/2022	Application Document No. TR010032/APP/6.2	
Drawing number		HE540039-CJV-ELS-SZP_ZZ000000_Z-DR-LV-00252		



Rev	Status	Rev. Date	Purpose of revision	Drawn	Chck'd	Apprv'd
P01	S8	05/08/2022	First Issued	BB	HP	SK

For location see Figure 7.16 - Visual Effects Drawing with Representative Viewpoint and Photomontage Locations

Camera: Canon EOS 6D MkII  
 Lens: Canon EF 50mm f/1.8 STM  
 Equipment: Manfrotto MA 454 Micro Positioning Plate  
 Manfrotto SBH-100 Ball Head

**Winter Viewpoint:**  
 Date and Time: N-17  
 06/04/2022 15:29

Visualisation Type: Type 3  
 Projection Type: Cylindrical  
 Enlargement Factor: 1.5  
 Horizontal FOV: 56.5°

FL, Max Aperture: 50mm, 1.75  
 Tripod Height: 1.5m  
 Viewpoint Ground Height: 26.6m AOD  
 Viewpoint Grid Reference: 566306E, 180393N

Distance to Order Limits: 500m  
 View Direction (Centre of View): SSE  
 GPS Accuracy: 5m



**Client**

**LOWER THAMES CROSSING**  
 5th Floor Beaufort House  
 15 St Botolph Street  
 London EC3A 7DT

**Project**

LOWER THAMES CROSSING

**Drawing title**

Figure 7.19  
 Baseline Photography - Viewpoint N-17  
 Winter Year 1  
 Sheet 1 of 4

Drawn	BB	Date - 05/08/2022	Status	Revision
Checked	HP	Date - 05/08/2022	S8	P01
Approved	SK	Date - 05/08/2022	Application Document No. TR010032/APP/6.2	
Drawing number				
HE540039-CJV-ELS-SZP_ZZ000000_Z-DR-LV-00253A				



Proposed nitrogen deposition compensation site

Rev	Status	Rev. Date	Purpose of revision	Drawn	Chck'd	Apprv'd
P01	S8	05/08/2022	First Issued	BB	HP	SK

For location see Figure 7.16 - Visual Effects Drawing with Representative Viewpoint and Photomontage Locations

<b>Winter Viewpoint:</b> Date and Time:	N-17 06/04/2022 15:34	<b>Camera:</b> Canon EOS 6D MkII	<b>Visualisation Type:</b> Type 3	<b>FL, Max Aperture:</b> 50mm, 1.75	<b>Distance to Order Limits:</b> 10m
<b>Lens:</b> Canon EF 50mm f/1.8 STM	<b>Projection Type:</b> Cylindrical	<b>Equipment:</b> Manfrotto MA 454 Micro Positioning Plate	<b>Tripod Height:</b> 1.5m	<b>Viewpoint Ground Height:</b> 7.6m AOD	<b>View Direction (Centre of View):</b> SSE
<b>Manfrotto SBH-100 Ball Head</b>	<b>Enlargement Factor:</b> 1.5	<b>Horizontal FOV:</b> 56.5°	<b>Viewpoint Grid Reference:</b> 566306E, 180393N	<b>GPS Accuracy:</b> 5m	

Client



**LOWER THAMES CROSSING**  
5th Floor Beaufort House  
15 St Botolph Street  
London EC3A 7DT

<b>Project</b>	LOWER THAMES CROSSING
<b>Drawing title</b>	Figure 7.19 Photomontage - Viewpoint N-17 Winter Year 1 Sheet 1 of 4

<b>Drawn</b>	BB	<b>Date</b>	- 05/08/2022	<b>Status</b>	S8	<b>Revision</b>	P01
<b>Checked</b>	HP	<b>Date</b>	- 05/08/2022	<b>Application Document No. TR010032/APP/6.2</b>			
<b>Approved</b>	SK	<b>Date</b>	- 05/08/2022	<b>Drawing number</b> HE540039-CJV-ELS-SZP_ZZ000000_Z-DR-LV-00253			



Rev	Status	Rev. Date	Purpose of revision	Drawn	Chck'd	Apprv'd
P01	S8	05/08/2022	First Issued	BB	HP	SK

For location see Figure 7.16 - Visual Effects Drawing with Representative Viewpoint and Photomontage Locations

Camera: Canon EOS 6D MkII  
 Lens: Canon EF 50mm f/1.8 STM  
 Equipment: Manfrotto MA 454 Micro Positioning Plate  
 Manfrotto SBH-100 Ball Head

**Winter Viewpoint:** N-17  
 Date and Time: 06/04/2022 15:29

Visualisation Type: Type 3  
 Projection Type: Cylindrical  
 Enlargement Factor: 1.5  
 Horizontal FOV: 56.5°

FL, Max Aperture: 50mm, 1.75  
 Tripod Height: 1.5m  
 Viewpoint Ground Height: 26.6m AOD  
 Viewpoint Grid Reference: 566306E, 180393N

Distance to Order Limits: 500m  
 View Direction (Centre of View): SSE  
 GPS Accuracy: 5m



**Client**

**LOWER THAMES CROSSING**  
 5th Floor Beaufort House  
 15 St Botolph Street  
 London EC3A 7DT

**Project** LOWER THAMES CROSSING

**Drawing title** Figure 7.19  
 Baseline Photography - Viewpoint N-17  
 Winter Year 1  
 Sheet 2 of 4

Drawn	BB	Date - 05/08/2022	Status	Revision
Checked	HP	Date - 05/08/2022	S8	P01
Approved	SK	Date - 05/08/2022	Application Document No. TR010032/APP/6.2	
Drawing number HE540039-CJV-ELS-SZP_ZZ000000_Z-DR-LV-00254A				



Proposed nitrogen deposition compensation site

Rev	Status	Rev. Date	Purpose of revision	Drawn	Chck'd	Apprv'd
P01	S8	05/08/2022	First Issued	BB	HP	SK

For location see Figure 7.16 - Visual Effects Drawing with Representative Viewpoint and Photomontage Locations

<b>Winter Viewpoint:</b> Date and Time:	N-17 06/04/2022 15:34	Visualisation Type: Projection Type: Enlargement Factor: Horizontal FOV:	Type 3 Cylindrical 1.5 56.5°	FL, Max Aperture: Tripod Height: Viewpoint Ground Height: Viewpoint Grid Reference:	50mm, 1.75 1.5m 7.6m AOD 566306E, 180393N	Distance to Order Limits: View Direction (Centre of View): GPS Accuracy:	10m SSE 5m
--	--------------------------	---	---------------------------------------	--	--	---	------------------



**LOWER THAMES CROSSING**  
5th Floor Beaufort House  
15 St Botolph Street  
London EC3A 7DT

Project	LOWER THAMES CROSSING
Drawing title	Figure 7.19 Photomontage - Viewpoint N-17 Winter Year 1 Sheet 2 of 4

Drawn	BB	Date	- 05/08/2022	Status	S8	Revision	P01
Checked	HP	Date	- 05/08/2022	Application Document No. TR010032/APP/6.2			
Approved	SK	Date	- 05/08/2022	Drawing number HE540039-CJV-ELS-SZP_ZZ000000_Z-DR-LV-00254			



For location see Figure 7.16 - Visual Effects Drawing with Representative Viewpoint and Photomontage Locations

<b>Summer Viewpoint:</b> Date and Time:	N-17 14/06/2022 12:40	<b>Visualisation Type:</b> Projection Type: Enlargement Factor: Horizontal FOV:	Type 3 Cylindrical 1.5	<b>FL, Max Aperture:</b> Tripod Height: Viewpoint Ground Height: Viewpoint Grid Reference:	50mm, 1.75 1.5m 26.6m AOD 566306E, 180393N	<b>Distance to Order Limits:</b> View Direction (Centre of View): GPS Accuracy:	500m SSE 5m
--	--------------------------	--	------------------------------	---	---	--	-------------------

<b>Camera:</b> Lens: Equipment:	Canon EOS 6D MkII Canon EF 50mm f/1.8 STM Manfrotto MA 454 Micro Positioning Plate Manfrotto SBH-100 Ball Head
---------------------------------------	---

Client

**LOWER THAMES CROSSING**  
5th Floor Beaufort House  
15 St Botolph Street  
London EC3A 7DT

<b>Project</b>	LOWER THAMES CROSSING
<b>Drawing title</b>	Figure 7.19 Baseline Photography - Viewpoint N-17 Summer Year 15 Sheet 3 of 4

<b>Drawn</b>	BB	<b>Date</b>	- 05/08/2022	<b>Status</b>	S8	<b>Revision</b>	P01
<b>Checked</b>	HP	<b>Date</b>	- 05/08/2022				
<b>Approved</b>	SK	<b>Date</b>	- 05/08/2022				
<b>Drawing number</b>				HE540039-CJV-ELS-SZP_ZZ000000_Z-DR-LV-00255A			
TR010032/APP/6.2							

<b>Rev</b>	<b>Status</b>	<b>Rev. Date</b>	<b>Purpose of revision</b>	<b>Drawn</b>	<b>Chck'd</b>	<b>Apprv'd</b>
P01	S8	05/08/2022	First Issued	BB	HP	SK





Proposed nitrogen deposition compensation site

Rev	Status	Rev. Date	Purpose of revision	Drawn	Chck'd	Apprv'd
P01	S8	05/08/2022	First Issued	BB	HP	SK

For location see Figure 7.16 - Visual Effects Drawing with Representative Viewpoint and Photomontage Locations		<b>Summer Viewpoint:</b>	N-17				
		Date and Time:	14/06/2022 12:42				
Camera:	Canon EOS 6D MkII	Visualisation Type:	Type 3	FL, Max Aperture:	50mm, 1.75	Distance to Order Limits:	10m
Lens:	Canon EF 50mm f/1.8 STM	Projection Type:	Cylindrical	Tripod Height:	1.5m	View Direction	SSE
Equipment:	Manfrotto MA 454 Micro Positioning Plate	Enlargement Factor:	1.5	Viewpoint Ground Height:	7.6m AOD	(Centre of View):	SSE
	Manfrotto SBH-100 Ball Head	Horizontal FOV:	56.5°	Viewpoint Grid Reference:	566306E, 180393N	GPS Accuracy:	5m

Client

**LOWER THAMES CROSSING**  
 5th Floor Beaufort House  
 15 St Botolph Street  
 London EC3A 7DT

Project	LOWER THAMES CROSSING
Drawing title	Figure 7.19 Photomontage - Viewpoint N-17 Summer Year 15 Sheet 3 of 4

Drawn	BB	Date - 05/08/2022	Status	S8	Revision	P01
Checked	HP	Date - 05/08/2022				
Approved	SK	Date - 05/08/2022	TR010032/APP/6.2			
Drawing number		HE540039-CJV-ELS-SZP_ZZ000000_Z-DR-LV-00255				



P01	S8	05/08/2022	First Issued	BB	HP	SK
Rev	Status	Rev. Date	Purpose of revision	Drawn	Chck'd	Apprv'd

For location see Figure 7.16 - Visual Effects Drawing with Representative Viewpoint and Photomontage Locations		<b>Summer Viewpoint:</b>	N-17				
		Date and Time:	14/06/2022 12:40				
Camera:	Canon EOS 6D MkII	Visualisation Type:	Type 3	FL, Max Aperture:	50mm, 1.75	Distance to Order Limits:	500m
Lens:	Canon EF 50mm f/1.8 STM	Projection Type:	Cylindrical	Tripod Height:	1.5m	View Direction	SSE
Equipment:	Manfrotto MA 454 Micro Positioning Plate	Enlargement Factor:	1.5	Viewpoint Ground Height:	26.6m AOD	(Centre of View):	SSE
	Manfrotto SBH-100 Ball Head	Horizontal FOV:	56.5°	Viewpoint Grid Reference:	566306E, 180393N	GPS Accuracy:	5m

Client



**LOWER THAMES CROSSING**  
 5th Floor Beaufort House  
 15 St Botolph Street  
 London EC3A 7DT

Project	LOWER THAMES CROSSING
Drawing title	Figure 7.19 Baseline Photography - Viewpoint N-17 Summer Year 15 Sheet 4 of 4

Drawn	BB	Date - 05/08/2022	Status	S8	Revision	P01
Checked	HP	Date - 05/08/2022				
Approved	SK	Date - 05/08/2022	Application Document No. TR010032/APP/6.2			
Drawing number		HE540039-CJV-ELS-SZP_ZZ000000_Z-DR-LV-00256A				



Proposed nitrogen deposition compensation site

P01	S8	05/08/2022	First Issued	BB	HP	SK
Rev	Status	Rev. Date	Purpose of revision	Drawn	Chck'd	Apprv'd

For location see Figure 7.16 - Visual Effects Drawing with Representative Viewpoint and Photomontage Locations		<b>Summer Viewpoint:</b>	N-17
		Date and Time:	14/06/2022 12:42
Camera:	Canon EOS 6D MkII	Visualisation Type:	Type 3
Lens:	Canon EF 50mm f/1.8 STM	Projection Type:	Cylindrical
Equipment:	Manfrotto MA 454 Micro Positioning Plate	Enlargement Factor:	1.5
	Manfrotto SBH-100 Ball Head	Horizontal FOV:	56.5°
FL, Max Aperture:	50mm, 1.75	Distance to Order Limits:	10m
Tripod Height:	1.5m	View Direction	SSE
Viewpoint Ground Height:	7.6m AOD	(Centre of View):	SSE
Viewpoint Grid Reference:	566306E, 180393N	GPS Accuracy:	5m



**LOWER THAMES CROSSING**  
 5th Floor Beaufort House  
 15 St Botolph Street  
 London EC3A 7DT

Project	LOWER THAMES CROSSING
Drawing title	Figure 7.19 Photomontage - Viewpoint N-17 Summer Year 15 Sheet 4 of 4

Drawn	BB	Date - 05/08/2022	Status	S8	Revision	P01
Checked	HP	Date - 05/08/2022	Application Document No. TR010032/APP/6.2			
Approved	SK	Date - 05/08/2022	Drawing number			
HE540039-CJV-ELS-SZP_ZZ000000_Z-DR-LV-00256						



P01	S8	05/08/2022	First Issued	BB	HP	SK
Rev	Status	Rev. Date	Purpose of revision	Drawn	Chck'd	Apprv'd

For location see Figure 7.16 - Visual Effects Drawing with Representative Viewpoint and Photomontage Locations

Camera: Canon EOS 6D MkII  
 Lens: Canon EF 50mm f/1.8 STM  
 Equipment: Manfrotto MA 454 Micro Positioning Plate  
 Manfrotto SBH-100 Ball Head

**Winter Viewpoint:**  
 Date and Time: N-19  
 21/02/2019 11:26

Visualisation Type: Type 3  
 Projection Type: Cylindrical  
 Enlargement Factor: 1.5  
 Horizontal FOV: 56.5°

FL, Max Aperture: 50mm, 1.75  
 Tripod Height: 1.5m  
 Viewpoint Ground Height: 28.1m AOD  
 Viewpoint Grid Reference: 564293E, 179661N

Distance to Order Limits: 310m  
 View Direction (Centre of View): NNE  
 GPS Accuracy: 5m



**LOWER THAMES CROSSING**  
 5th Floor Beaufort House  
 15 St Botolph Street  
 London EC3A 7DT

Project: LOWER THAMES CROSSING  
 Drawing title: Figure 7.19  
 Baseline Photography - Viewpoint N-19  
 Winter Year 1  
 Sheet 1 of 4

Drawn	BB	Date - 05/08/2022	Status	S8	Revision	P01
Checked	HP	Date - 05/08/2022	Application Document No. TR010032/APP/6.2			
Approved	SK	Date - 05/08/2022	Drawing number			
HE540039-CJV-ELS-SZP_ZZ000000_Z-DR-LV-00257A						



Rev	Status	Rev. Date	Purpose of revision	Drawn	Chck'd	Apprv'd
P01	S8	05/08/2022	First Issued	BB	HP	SK

For location see Figure 7.16 - Visual Effects Drawing with Representative Viewpoint and Photomontage Locations

Camera: Canon EOS 6D MkII  
 Lens: Canon EF 50mm f/1.8 STM  
 Equipment: Manfrotto MA 454 Micro Positioning Plate  
 Manfrotto SBH-100 Ball Head

Visualisation Type: Type 3  
 Projection Type: Cylindrical  
 Enlargement Factor: 1.5  
 Horizontal FOV: 56.5°

Winter Viewpoint:  
 Date and Time: N-19  
 21/02/2019 11:26

FL, Max Aperture: 50mm, 1.75  
 Tripod Height: 1.5m  
 Viewpoint Ground Height: 28.1m AOD  
 Viewpoint Grid Reference: 564293E, 179661N

Distance to Order Limits: 250m  
 View Direction (Centre of View): NNE  
 GPS Accuracy: 5m



**LOWER THAMES CROSSING**  
 5th Floor Beaufort House  
 15 St Botolph Street  
 London EC3A 7DT

Project: LOWER THAMES CROSSING  
 Drawing title: Figure 7.19  
 Photomontage - Viewpoint N-19  
 Winter Year 1  
 Sheet 1 of 4

Drawn	BB	Date - 05/08/2022	Status	S8	Revision	P01
Checked	HP	Date - 05/08/2022	Application Document No. TR010032/APP/6.2			
Approved	SK	Date - 05/08/2022	Drawing number			
HE540039-CJV-ELS-SZP_ZZ000000_Z-DR-LV-00257						



P01	S8	05/08/2022	First Issued	BB	HP	SK
Rev	Status	Rev. Date	Purpose of revision	Drawn	Chck'd	Apprv'd

For location see Figure 7.16 - Visual Effects Drawing with Representative Viewpoint and Photomontage Locations		<b>Winter Viewpoint:</b>	N-19				
		Date and Time:	21/02/2019 11:26				
Camera:	Canon EOS 6D MkII	Visualisation Type:	Type 3	FL, Max Aperture:	50mm, 1.75	Distance to Order Limits:	310m
Lens:	Canon EF 50mm f/1.8 STM	Projection Type:	Cylindrical	Tripod Height:	1.5m	View Direction	NNE
Equipment:	Manfrotto MA 454 Micro Positioning Plate	Enlargement Factor:	1.5	Viewpoint Ground Height:	28.1m AOD	(Centre of View):	NNE
	Manfrotto SBH-100 Ball Head	Horizontal FOV:	56.5°	Viewpoint Grid Reference:	564293E, 179661N	GPS Accuracy:	5m



**LOWER THAMES CROSSING**  
 5th Floor Beaufort House  
 15 St Botolph Street  
 London EC3A 7DT

Project	LOWER THAMES CROSSING
Drawing title	Figure 7.19 Baseline Photography - Viewpoint N-19 Winter Year 1 Sheet 2 of 4

Drawn	BB	Date - 05/08/2022	Status	S8	Revision	P01
Checked	HP	Date - 05/08/2022				
Approved	SK	Date - 05/08/2022	Application Document No. TR010032/APP/6.2			
Drawing number						
HE540039-CJV-ELS-SZP_ZZ000000_Z-DR-LV-00258A						



P01	S8	05/08/2022	First Issued	BB	HP	SK
Rev	Status	Rev. Date	Purpose of revision	Drawn	Chck'd	Apprv'd

For location see Figure 7.16 - Visual Effects Drawing with Representative Viewpoint and Photomontage Locations

Camera: Canon EOS 6D MkII  
 Lens: Canon EF 50mm f/1.8 STM  
 Equipment: Manfrotto MA 454 Micro Positioning Plate  
 Manfrotto SBH-100 Ball Head

**Winter Viewpoint:**  
 Date and Time: N-19  
 21/02/2019 11:26

Visualisation Type: Type 3  
 Projection Type: Cylindrical  
 Enlargement Factor: 1.5  
 Horizontal FOV: 56.5°

FL, Max Aperture: 50mm, 1.75  
 Tripod Height: 1.5m  
 Viewpoint Ground Height: 28.1m AOD  
 Viewpoint Grid Reference: 564293E, 179661N

Distance to Order Limits: 250m  
 View Direction (Centre of View): NNE  
 GPS Accuracy: 5m



**LOWER THAMES CROSSING**  
 5th Floor Beaufort House  
 15 St Botolph Street  
 London EC3A 7DT

Project: LOWER THAMES CROSSING  
 Drawing title: Figure 7.19  
 Photomontage - Viewpoint N-19  
 Winter Year 1  
 Sheet 2 of 4

Drawn	BB	Date - 05/08/2022	Status	Revision
Checked	HP	Date - 05/08/2022	S8	P01
Approved	SK	Date - 05/08/2022	Application Document No. TR010032/APP/6.2	
Drawing number HE540039-CJV-ELS-SZP_ZZ000000_Z-DR-LV-00258				



For location see Figure 7.16 - Visual Effects Drawing with Representative Viewpoint and Photomontage Locations

**Summer Viewpoint:**  
Date and Time: N-19  
04/06/2019 09:03

Camera: Canon EOS 6D MkII  
Lens: Canon EF 50mm f/1.8 STM  
Equipment: Manfrotto MA 454 Micro Positioning Plate  
Manfrotto SBH-100 Ball Head

Visualisation Type: Type 3  
Projection Type: Cylindrical  
Enlargement Factor: 1.5  
Horizontal FOV: 56.5°

FL, Max Aperture: 50mm, 1.75  
Tripod Height: 1.5m  
Viewpoint Ground Height: 28.1m AOD  
Viewpoint Grid Reference: 564293E, 179661N

Distance to Order Limits: 310m  
View Direction (Centre of View): NNE  
GPS Accuracy: 5m



**LOWER THAMES CROSSING**  
5th Floor Beaufort House  
15 St Botolph Street  
London EC3A 7DT

Project: LOWER THAMES CROSSING  
Drawing title: Figure 7.19  
Baseline Photography - Viewpoint N-19  
Summer Year 15  
Sheet 3 of 4

Drawn	BB	Date - 05/08/2022	Status	Revision
Checked	HP	Date - 05/08/2022	S8	P01
Approved	SK	Date - 05/08/2022	Application Document No. TR010032/APP/6.2	
Drawing number HE540039-CJV-ELS-SZP_ZZ000000_Z-DR-LV-00259A				

P01	S8	05/08/2022	First Issued	BB	HP	SK
Rev	Status	Rev. Date	Purpose of revision	Drawn	Chck'd	Apprv'd





P01	S8	05/08/2022	First Issued	BB	HP	SK
Rev	Status	Rev. Date	Purpose of revision	Drawn	Chck'd	Apprv'd

For location see Figure 7.16 - Visual Effects Drawing with Representative Viewpoint and Photomontage Locations

Camera: Canon EOS 6D MkII  
 Lens: Canon EF 50mm f/1.8 STM  
 Equipment: Manfrotto MA 454 Micro Positioning Plate  
 Manfrotto SBH-100 Ball Head

**Summer Viewpoint:** N-19  
 Date and Time: 04/06/2019 09:03

Visualisation Type: Type 3  
 Projection Type: Cylindrical  
 Enlargement Factor: 1.5  
 Horizontal FOV: 56.5°

FL, Max Aperture: 50mm, 1.75  
 Tripod Height: 1.5m  
 Viewpoint Ground Height: 28.1m AOD  
 Viewpoint Grid Reference: 564293E, 179661N

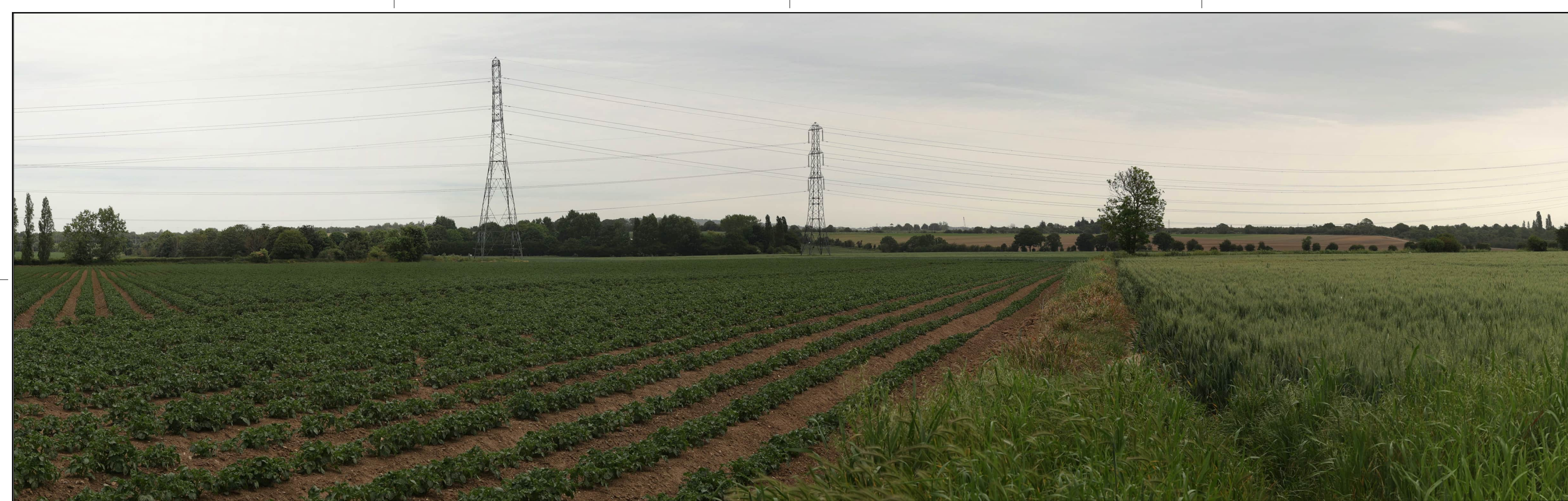
Distance to Order Limits: 250m  
 View Direction (Centre of View): NNE  
 GPS Accuracy: 5m



**LOWER THAMES CROSSING**  
 5th Floor Beaufort House  
 15 St Botolph Street  
 London EC3A 7DT

Project: LOWER THAMES CROSSING  
 Drawing title: Figure 7.19  
 Photomontage - Viewpoint N-19  
 Summer Year 15  
 Sheet 3 of 4

Drawn	BB	Date - 05/08/2022	Status	Revision
Checked	HP	Date - 05/08/2022	S8	P01
Approved	SK	Date - 05/08/2022	Application Document No. TR010032/APP/6.2	
Drawing number HE540039-CJV-ELS-SZP_ZZ000000_Z-DR-LV-00259				



Rev	Status	Rev. Date	Purpose of revision	Drawn	Chck'd	Apprv'd
P01	S8	05/08/2022	First Issued	BB	HP	SK

<small>For location see Figure 7.16 - Visual Effects Drawing with Representative Viewpoint and Photomontage Locations</small>		<b>Summer Viewpoint:</b> Date and Time: N-19 04/06/2019 09:03	Visualisation Type: Type 3 Projection Type: Cylindrical Enlargement Factor: 1.5 Horizontal FOV: 56.5°	FL, Max Aperture: 50mm, 1.75 Tripod Height: 1.5m Viewpoint Ground Height: 28.1m AOD Viewpoint Grid Reference: 564293E, 179661N	Distance to Order Limits: 310m View Direction (Centre of View): NNE GPS Accuracy: 5m
Camera: Canon EOS 6D MkII Lens: Canon EF 50mm f/1.8 STM Equipment: Manfrotto MA 454 Micro Positioning Plate Manfrotto SBH-100 Ball Head					

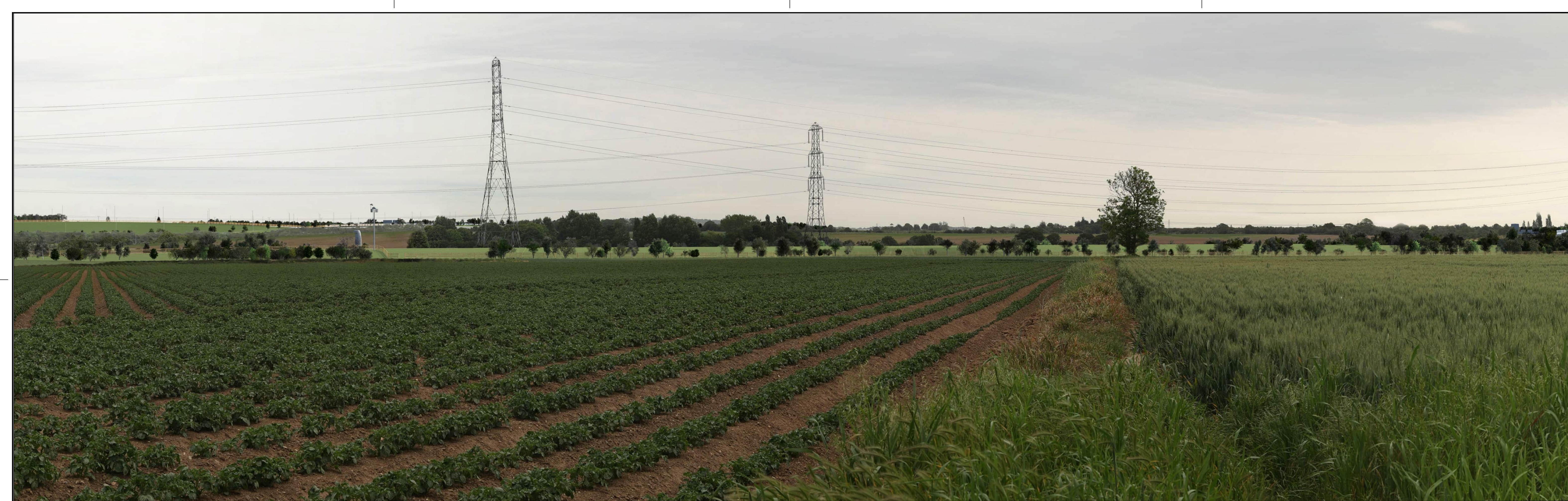
Client



**LOWER THAMES CROSSING**  
 5th Floor Beaufort House  
 15 St Botolph Street  
 London EC3A 7DT

Project	LOWER THAMES CROSSING
Drawing title	Figure 7.19 Baseline Photography - Viewpoint N-19 Summer Year 15 Sheet 4 of 4

Drawn	BB	Date - 05/08/2022	Status	S8	Revision	P01
Checked	HP	Date - 05/08/2022	Application Document No. TR010032/APP/6.2			
Approved	SK	Date - 05/08/2022	Drawing number			
HE540039-CJV-ELS-SZP_ZZ000000_Z-DR-LV-00260A						



Rev	Status	Rev. Date	Purpose of revision	Drawn	Chck'd	Apprv'd
P01	S8	05/08/2022	First Issued	BB	HP	SK

For location see Figure 7.16 - Visual Effects Drawing with Representative Viewpoint and Photomontage Locations		<b>Summer Viewpoint:</b>	N-19		
		Date and Time:	04/06/2019 09:03		
Camera:	Canon EOS 6D MkII	Visualisation Type:	Type 3	FL, Max Aperture:	50mm, 1.75
Lens:	Canon EF 50mm f/1.8 STM	Projection Type:	Cylindrical	Tripod Height:	1.5m
Equipment:	Manfrotto MA 454 Micro Positioning Plate	Enlargement Factor:	1.5	Viewpoint Ground Height:	28.1m AOD
	Manfrotto SBH-100 Ball Head	Horizontal FOV:	56.5°	Viewpoint Grid Reference:	564293E, 179661N
				Distance to Order Limits:	250m
				View Direction (Centre of View):	NNE
				GPS Accuracy:	5m



**LOWER THAMES CROSSING**  
 5th Floor Beaufort House  
 15 St Botolph Street  
 London EC3A 7DT

Project	LOWER THAMES CROSSING
Drawing title	Figure 7.19 Photomontage - Viewpoint N-19 Summer Year 15 Sheet 4 of 4

Drawn	BB	Date - 05/08/2022	Status	S8	Revision	P01
Checked	HP	Date - 05/08/2022	Application Document No. TR010032/APP/6.2			
Approved	SK	Date - 05/08/2022	Drawing number			
HE540039-CJV-ELS-SZP_ZZ000000_Z-DR-LV-00260						



P01	S8	05/08/2022	First Issued	BB	HP	SK
Rev	Status	Rev. Date	Purpose of revision	Drawn	Chck'd	Apprv'd

For location see Figure 7.16 - Visual Effects Drawing with Representative Viewpoint and Photomontage Locations

Camera: Canon EOS 6D MkII  
 Lens: Canon EF 50mm f/1.8 STM  
 Equipment: Manfrotto MA 454 Micro Positioning Plate  
 Manfrotto SBH-100 Ball Head

**Winter Viewpoint:**  
 Date and Time: N-21  
 21/02/2019 09:52

Visualisation Type: Type 3  
 Projection Type: Cylindrical  
 Enlargement Factor: 1.5  
 Horizontal FOV: 56.5°

FL, Max Aperture: 50mm, 1.75  
 Tripod Height: 1.5m  
 Viewpoint Ground Height: 25.1m AOD  
 Viewpoint Grid Reference: 564385E, 180736N

Distance to Order Limits: 0m  
 View Direction (Centre of View): SSW  
 GPS Accuracy: 5m

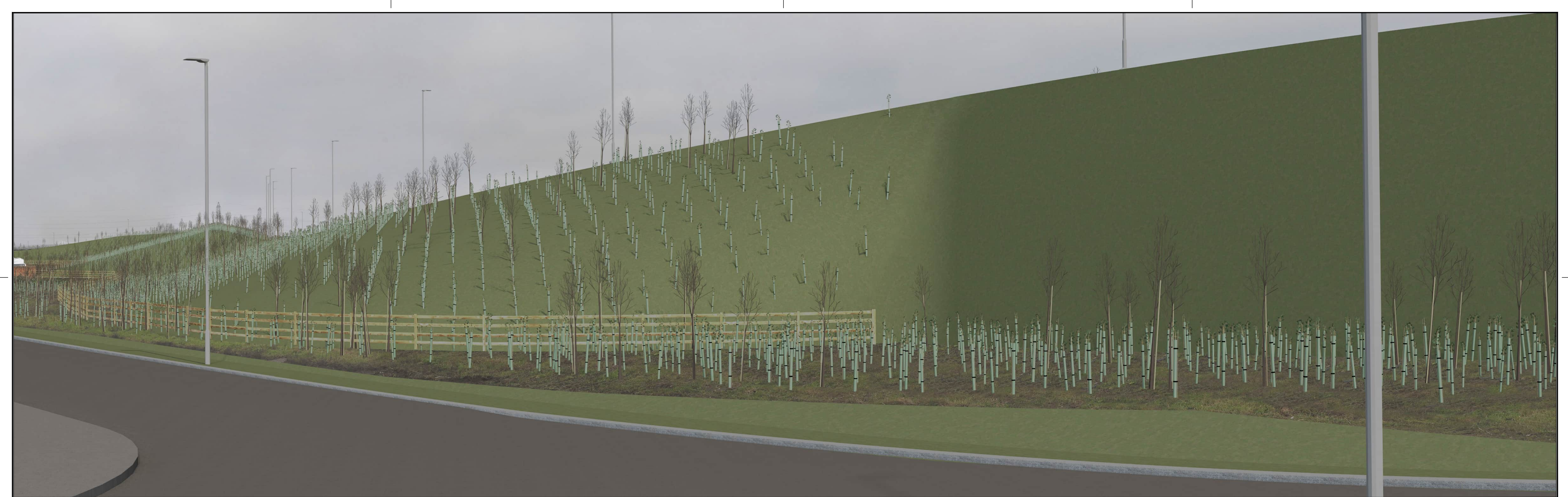


**Client**  
**LOWER THAMES CROSSING**  
 5th Floor Beaufort House  
 15 St Botolph Street  
 London EC3A 7DT

**Project**  
 LOWER THAMES CROSSING

**Drawing title**  
 Figure 7.19  
 Baseline Photography - Viewpoint N-21  
 Winter Year 1  
 Sheet 1 of 2

Drawn	BB	Date - 05/08/2022	Status	Revision
Checked	HP	Date - 05/08/2022	S8	P01
Approved	SK	Date - 05/08/2022	Application Document No. TR010032/APP/6.2	
Drawing number <b>HE540039-CJV-ELS-SZP_ZZ000000_Z-DR-LV-00261A</b>				



P01	S8	05/08/2022	First Issued	BB	HP	SK
Rev	Status	Rev. Date	Purpose of revision	Drawn	Chck'd	Apprv'd

For location see Figure 7.16 - Visual Effects Drawing with Representative Viewpoint and Photomontage Locations

Camera: Canon EOS 6D MkII  
 Lens: Canon EF 50mm f/1.8 STM  
 Equipment: Manfrotto MA 454 Micro Positioning Plate  
 Manfrotto SBH-100 Ball Head

**Winter Viewpoint:**  
 Date and Time: N-21  
 21/02/2019 09:52

Visualisation Type: Type 3  
 Projection Type: Cylindrical  
 Enlargement Factor: 1.5  
 Horizontal FOV: 56.5°

FL, Max Aperture: 50mm, 1.75  
 Tripod Height: 1.5m  
 Viewpoint Ground Height: 25.1m AOD  
 Viewpoint Grid Reference: 564385E, 180736N

Distance to Order Limits: 0m  
 View Direction (Centre of View): SSW  
 GPS Accuracy: 5m



**LOWER THAMES CROSSING**  
 5th Floor Beaufort House  
 15 St Botolph Street  
 London EC3A 7DT

Project: LOWER THAMES CROSSING  
 Drawing title: Figure 7.19  
 Photomontage - Viewpoint N-21  
 Winter Year 1  
 Sheet 1 of 2

Drawn	BB	Date - 05/08/2022	Status	Revision
Checked	HP	Date - 05/08/2022	S8	P01
Approved	SK	Date - 05/08/2022	Application Document No. TR010032/APP/6.2	
Drawing number HE540039-CJV-ELS-SZP_ZZ000000_Z-DR-LV-00261				



Rev	Status	Rev. Date	Purpose of revision	Drawn	Chck'd	Apprv'd
P01	S8	05/08/2022	First Issued	BB	HP	SK

For location see Figure 7.16 - Visual Effects Drawing with Representative Viewpoint and Photomontage Locations

Camera: Canon EOS 6D MkII  
 Lens: Canon EF 50mm f/1.8 STM  
 Equipment: Manfrotto MA 454 Micro Positioning Plate  
 Manfrotto SBH-100 Ball Head

Visualisation Type: Type 3  
 Projection Type: Cylindrical  
 Enlargement Factor: 1.5  
 Horizontal FOV: 56.5°

Summer Viewpoint: N-21  
 Date and Time: 04/06/2019 09:44

Tripod Height: 1.5m  
 Viewpoint Ground Height: 25.1m AOD  
 Viewpoint Grid Reference: 564385E, 180736N

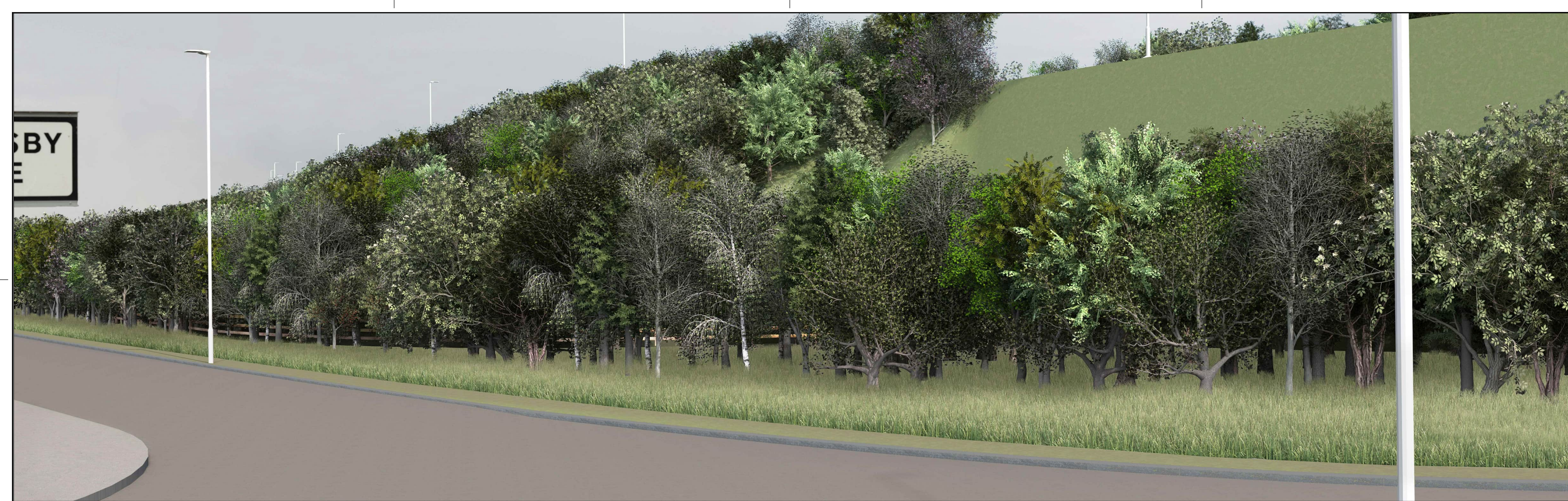
FL, Max Aperture: 50mm, 1.75  
 Distance to Order Limits: 0m  
 View Direction (Centre of View): SSW  
 GPS Accuracy: 5m



**LOWER THAMES CROSSING**  
 5th Floor Beaufort House  
 15 St Botolph Street  
 London EC3A 7DT

Project LOWER THAMES CROSSING  
 Drawing title Figure 7.19  
 Baseline Photography - Viewpoint N-21  
 Summer Year 15  
 Sheet 2 of 2

Drawn	BB	Date - 05/08/2022	Status	Revision
Checked	HP	Date - 05/08/2022	S8	P01
Approved	SK	Date - 05/08/2022	Application Document No. TR010032/APP/6.2	
Drawing number <b>HE540039-CJV-ELS-SZP_ZZ000000_Z-DR-LV-00262A</b>				



Rev	Status	Rev. Date	Purpose of revision	Drawn	Chck'd	Apprv'd
P01	S8	05/08/2022	First Issued	BB	HP	SK

For location see Figure 7.16 - Visual Effects Drawing with Representative Viewpoint and Photomontage Locations		<b>Summer Viewpoint:</b>	N-21				
		Date and Time:	04/06/2019 09:44				
Camera:	Canon EOS 6D MkII	Visualisation Type:	Type 3	FL, Max Aperture:	50mm, 1.75	Distance to Order Limits:	0m
Lens:	Canon EF 50mm f/1.8 STM	Projection Type:	Cylindrical	Tripod Height:	1.5m	View Direction	(Centre of View): SSW
Equipment:	Manfrotto MA 454 Micro Positioning Plate	Enlargement Factor:	1.5	Viewpoint Ground Height:	25.1m AOD	Viewpoint Grid Reference:	564385E, 180736N
	Manfrotto SBH-100 Ball Head	Horizontal FOV:	56.5°	Viewpoint Grid Reference:	564385E, 180736N	GPS Accuracy:	5m

Client



**LOWER THAMES CROSSING**  
 5th Floor Beaufort House  
 15 St Botolph Street  
 London EC3A 7DT

Project	LOWER THAMES CROSSING
Drawing title	Figure 7.19 Photomontage - Viewpoint N-21 Summer Year 15 Sheet 2 of 2

Drawn	BB	Date - 05/08/2022	Status	Revision
Checked	HP	Date - 05/08/2022	S8	P01
Approved	SK	Date - 05/08/2022	Application Document No. TR010032/APP/6.2	
Drawing number		HE540039-CJV-ELS-SZP_ZZ000000_Z-DR-LV-00262		

If you need help accessing this or any other National Highways information, please call **0300 123 5000** and we will help you.

© Crown copyright 2022.

You may re-use this information (not including logos) free of charge in any format or medium, under the terms of the Open Government Licence. To view this licence:

visit [www.nationalarchives.gov.uk/doc/open-government-licence/](http://www.nationalarchives.gov.uk/doc/open-government-licence/)

write to the **Information Policy Team, The National Archives, Kew, London TW9 4DU**, or email [psi@nationalarchives.gsi.gov.uk](mailto:psi@nationalarchives.gsi.gov.uk).

Mapping (where present): © Crown copyright and database rights 2022 OS 100030649. You are permitted to use this data solely to enable you to respond to, or interact with, the organisation that provided you with the data. You are not permitted to copy, sub-license, distribute or sell any of this data to third parties in any form.

If you have any enquiries about this publication email [info@nationalhighways.co.uk](mailto:info@nationalhighways.co.uk) or call **0300 123 5000\***.

\*Calls to 03 numbers cost no more than a national rate call to an 01 or 02 number and must count towards any inclusive minutes in the same way as 01 and 02 calls. These rules apply to calls from any type of line including mobile, BT, other fixed line or payphone. Calls may be recorded or monitored.

Printed on paper from well-managed forests and other controlled sources when issued directly by National Highways.

Registered office Bridge House, 1 Walnut Tree Close, Guildford GU1 4LZ

National Highways Company Limited registered in England and Wales number 09346363